

LUBY RENTS

Equipment is Our Product.
Service is Our Business.

Parts • Sales • Service • Rentals

www.lubyequipment.com



RENTAL EQUIPMENT RATES and SPECIFICATIONS

www.lubyrents.com



About Luby Equipment

www.lubyequipment.com

Luby Equipment traces its beginnings to 1977, when Bob Luby seized the opportunity to become an owner of Machine Maintenance and Equipment Company. He had begun his career in heavy equipment sales and had experience in everything from cranes to excavators. Initially, the company focused on maintaining and repairing heavy industrial equipment, but it has since grown to include three divisions that sell and service equipment—the construction equipment division, the oilfield division, and the power generation division.

Construction Equipment

The construction division has expanded through acquisitions and branch additions. The first acquisition was Bistate Machinery, the Fiat Allis dealer, in 1989. Three years later, Luby purchased Case Power & Equipment in St. Louis and Cape Girardeau, MO, and branch openings in Illinois followed in Quincy, Springfield, and Fairmont City. Today, there are eight locations in the construction equipment division.

Oilfields

The beginnings of the oilfield division emerged when the company became a dealer for Ingersoll-Rand water well drills, down hole hammers and bits, and high-pressure compressors. Initially, the company focused on servicing the water well industry, but with the explosive growth in oil and gas production, Luby naturally increased its involvement with those activities as well. Our West Virginia location supplies equipment, parts and service, including renting compressor packages with operators, hammer and bit sales and rental. Other equipment rentals include but not limited to wheel loaders, excavators, telehandlers and man lifts.

Power Generation

The power generation division was launched in 2005 when Luby Equipment Services was approached by a major manufacturer of power generator products to represent their products in Luby's markets. This division's growth was aided by several ice storms, and it has become a major division and an integral part of the company. The common thread throughout the company is its emphasis on service and the need for 24/7 emergency response. Today, Luby sells and supports its power generation products throughout Missouri and Illinois, with eight full service locations, just as it does with other equipment lines. Luby is one of the largest providers of scheduled maintenance contracts in the two state area, offering

maintenance services to all generator owners and covering all brands of generators.

Our Family Business

Bob's sons, Tim and Steve, grew up in the family business, spending summers helping out in the parts department. Today, Steve has his feet firmly planted in Luby Equipment. Like most successful family businesses, Luby Equipment has a loyal group of employees who have been with the company for many years. They all strive to satisfy customers 100% of the time. The motto they all embrace is: *"Equipment is Our Product. Service is Our Business."*

Our Services

Maintaining a policy of zero downtime, Luby Equipment provides same day parts delivery and on-site service, 24 hours a day, 7 days a week. Technicians undergo extensive training and are certified for any equipment they service. They routinely troubleshoot a situation to identify problems and quickly offer solutions to enhance your equipment's performance.

Our Customers

Luby Equipment's core customer base began with smaller mom and pop companies. Many of these companies have grown, as Luby has, and customers now range in size from small startups to very large companies, many of which are second and third generation family businesses. Customers represent a wide variety of business. Construction companies, road builders, excavating contractors, utility contractors, landscapers, government agencies, quarries and aggregate processors. Oil and gas companies, rental companies, farmers, recyclers and waste handlers, railroad and municipality crews. Additionally industries with warehouses and routine maintenance needs.

Our Equipment

When the opportunity arose, Luby Equipment expanded its equipment lines in ways that help customers with their businesses. The equipment brands Luby carries, include the full line of CASE construction equipment, Takeuchi compact track loaders and mini excavators and Toro construction equipment. Additionally we carry trailers and a wide variety of ground engaging tools and attachments from Fecon and Indeco. Shoring equipment is provided by Luby Shoring Services, LLC.

Table of Contents

CONSTRUCTION EQUIPMENT 3 – 7	Excavators — Tracked <i>CASE</i> 6	Trench Rollers —
Loader Backhoes <i>CASE</i> 3	Compact Wheel Loaders <i>CASE</i> 7	Remote Control <i>Bomag</i> 8
Crawler Dozers <i>CASE</i> 3	Wheel Loaders <i>CASE</i> 7	MISCELLANEOUS EQUIPMENT 9
Compact Track Loaders <i>CASE, Takeuchi</i> . . 4	Rough Terrain Forklifts <i>CASE</i> 7	Machine Control Systems <i>Leica</i> 9
Skid Steers <i>CASE</i> 4	COMPACTION EQUIPMENT 8	Lasers <i>Leica</i> 9
Skid Steer/Track/Loader	Single Drum — Sheepsfoot/ Smooth Rollers <i>CASE</i> 8	Compact Utility Vehicles <i>Toro</i> 9
Attachments <i>Stanley-Paladin, Fecon</i> . . 5	Double Drum Vibratory/ Asphalt Rollers <i>CASE</i> 8	TRENCH SHIELDING AND SHORING EQUIPMENT 10
Breakers <i>Indeco</i> 5		RENTAL TERMS AND CONDITIONS 11
Excavators — Compact <i>CASE, Takeuchi</i> . . 6		

Construction Equipment

Loader Backhoes

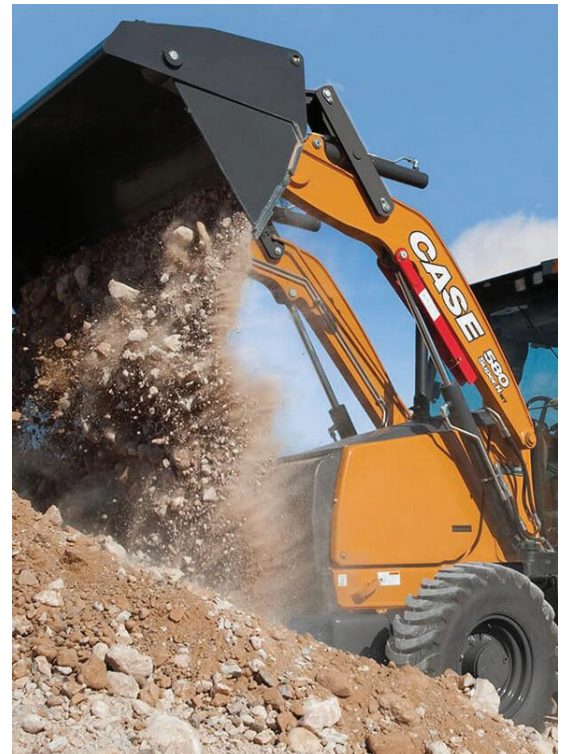


Model	Net HP	Operating Weight	Max Dig Depth	Day	Week	4 Weeks
575N EP	74 HP	18,298 lb	14' 5"	\$365	\$990	\$2,705
580N EP	74 HP	15,795 lb	18' 6"	\$330	\$910	\$2,510
580N	90 HP	16,589 lb	18' 3"	\$365	\$990	\$2,705
580SN	97 HP	17,269 lb	17' 11"	\$385	\$1,050	\$2,870
580SN WT	97 HP	20,077 lb	18'	\$405	\$1,105	\$3,045
580SV	97 HP	18,695 lb	18' 6"	\$375	\$1,030	\$2,825
590SN	110 HP	20,532 lb	19' 6"	\$425	\$1,155	\$3,175

All units equipped with cab heater and A/C, X-hoe, 4 wheel drive, ride control, manual quick coupler, and auxiliary hydraulics

ADDITIONAL BACKHOE ATTACHMENTS

Model	Day	Week	4 Weeks
Additional Bucket Rental	\$60	\$170	\$500
Auger and Bit	\$115	\$330	\$995
Auger Extension	\$25	\$70	\$200
Additional Auger Bit	\$60	\$170	\$500
HP1100 Breaker	\$470	\$1,410	\$4,220
HP1250 Breaker	\$485	\$1,445	\$4,320
HP1500 Breaker	\$500	\$1,490	\$4,470
Forks	\$150	\$450	\$1,350



Model	Net HP	Operating Weight	Pad Width	Blade Width	Day	Week	4 Weeks
650M	68 HP	15,803 lb	24"	90"	\$445	\$1,470	\$3,970
750M	92 HP	20,040 lb	28"	96"	\$555	\$1,825	\$4,965
850M	112 HP	21,980 lb	28"	104"	\$660	\$2,210	\$5,960
1150M	127 HP	31,134 lb	30"	120"	\$805	\$2,405	\$7,200
1650M	150 HP	37,756 lb	34"	130"	\$910	\$2,950	\$8,195
2050M	214 HP	45,414 lb	36"	135"	\$1,215	\$4,025	\$10,925

Extra long track, wide track, and low ground pressure models available.

Crawler Dozers



Construction Equipment

Compact Track Loader



CASE
CONSTRUCTION

Model	Net HP	Operating Weight	Rated Operating Capacity*	Available Bucket Widths	Day	Week	4 Weeks
TR270B	74 HP	8,270 lb	2,700 lb	66"	\$375	\$1,075	\$3,070
TR270B HF	74 HP	8,270 lb	2,700 lb	66"	\$395	\$1,180	\$3,380
TR310B	74 HP	8,880 lb	3,100 lb	72"	\$385	\$1,100	\$3,100
TR310B HF	74 HP	8,880 lb	3,100 lb	72"	\$415	\$1,225	\$3,410
TR340B	90 HP	10,000 lb	3,400 lb	78"	\$420	\$1,255	\$3,525
TR340B HF	90 HP	10,000 lb	3,400 lb	78"	\$460	\$1,365	\$3,895
TV370B	74 HP	9,630 lb	3,700 lb	78"	\$440	\$1,280	\$3,545
TV370B HF	74 HP	9,630 lb	3,700 lb	78"	\$470	\$1,355	\$3,820
TV450B	90 HP	10,610 lb	4,500 lb	78"	\$515	\$1,610	\$3,955
TV450B HF	90 HP	10,610 lb	4,500 lb	78"	\$555	\$1,700	\$4,250
TV620B	114 HP	16,100 lb	6,200 lb	78"	\$665	\$2,040	\$5,100

TR = Radial Lift, TV = Vertical Lift, HF = High Flow • Machines equipped with smooth or tooth bucket • See page 5 for attachments



TAKEUCHI

Model	Net HP	Operating Weight	Rated Operating Capacity*	Available Bucket Widths	Day	Week	4 Weeks
TL6CR	65 HP	7,780 lb	2,635 lb	60" – 80"	\$360	\$1,070	\$2,950
TL8R2-CR	74 HP	8,631 lb	3,010 lb	60" – 80"	\$385	\$1,100	\$3,100
TL8R2-CRH	74 HP	8,631 lb	3,010 lb	60" – 80"	\$415	\$1,225	\$3,410
TL10V2	74 HP	10,270 lb	3,600 lb	70" – 90"	\$440	\$1,280	\$3,545
TL10V2 HF	74 HP	10,270 lb	3,600 lb	70" – 90"	\$470	\$1,355	\$3,820
TL12R2/V2	111 HP	12,590 lb	4,315 lb	76" – 90"	\$515	\$1,610	\$3,955
TL12R2/V2 HF	111 HP	12,590 lb	4,315 lb	76" – 90"	\$555	\$1,700	\$4,250

HF = High Flow • Machines equipped with smooth or tooth bucket • See page 5 for attachments

Skid Steers



CASE
CONSTRUCTION

Model	Net HP	Operating Weight	Rated Operating Capacity*	Available Bucket Widths	Day	Week	4 Weeks
SR160B	60 HP	5,510 lb	1,600 lb	66" – 84"	\$205	\$610	\$1,825
SR175B	67 HP	6,270 lb	1,750 lb	66" – 84"	\$205	\$610	\$1,825
SR175B HF	67 HP	6,270 lb	1,750 lb	66" – 84"	\$220	\$660	\$1,985
SV185B	60 HP	6,570 lb	1,850 lb	66" – 84"	\$240	\$805	\$2,155
SV185B HF	60 HP	6,570 lb	1,850 lb	66" – 84"	\$250	\$750	\$2,235
SR210B	74 HP	6,970 lb	2,100 lb	66" – 84"	\$305	\$1,075	\$2,735
SR210B HF	74 HP	6,970 lb	2,100 lb	66" – 84"	\$330	\$1,160	\$2,980
SR240B	74 HP	7,400 lb	2,400 lb	66" – 84"	\$315	\$1,105	\$2,755
SR240B HF	74 HP	7,400 lb	2,400 lb	66" – 84"	\$345	\$1,245	\$3,065
SR270B	90 HP	8,117 lb	2,700 lb	70" – 84"	\$325	\$1,160	\$2,755
SR270B HF	90 HP	8,117 lb	2,700 lb	70" – 84"	\$365	\$1,270	\$3,045
SV280B	74 HP	8,090 lb	2,800 lb	70" – 84"	\$325	\$1,160	\$2,755
SV280B HF	74 HP	8,090 lb	2,800 lb	70" – 84"	\$365	\$1,270	\$3,065
SV340B	90 HP	9,100 lb	3,400 lb	70" – 84"	\$345	\$1,160	\$2,790
SV340B HF	90 HP	9,100 lb	3,400 lb	70" – 84"	\$375	\$1,270	\$3,085

SR = Radial Lift, SV = Vertical Lift, HF = High Flow • Machines equipped with smooth or tooth bucket • See page 5 for attachments



*Rated Operating Capacity is measured at 50% of tipping load

Construction Equipment

Skid Steer/Track Loader Attachments



Description	Day	Week	4 Weeks
LOADER ATTACHMENTS STANDARD FLOW			
Breaker 500 ft lb	\$250	\$750	\$2,235
Breaker 750 ft lb	\$290	\$865	\$2,585
Brush Hog 72" – 80"	\$275	\$965	\$2,485
Bucket – Extra	\$60	\$170	\$500
Dozer Blade 80" or 96"	\$170	\$580	\$1,490
Drop Hammer Cyclone 3,500 lb	\$305	\$1,065	\$2,735
Grapple Root 72" – 82"	\$105	\$350	\$895
Pallet Fork	\$60	\$170	\$500
Power Rake	\$275	\$910	\$2,485
Grapple 72" – 78"	\$105	\$350	\$895
Soil Conditioner/Preparator	\$170	\$580	\$1,490
STUMPEX	\$390	\$1,160	\$3,480
Stump Planer	\$85	\$275	\$805
Trencher – 6" W x 48" D	\$190	\$630	\$1,715
Tree Puller	\$85	\$275	\$805

LOADER ATTACHMENTS HIGH FLOW

Cold Planer – 40" Drum	\$620	\$2,065	\$5,560
Mulcher	\$555	\$1,875	\$4,965

AUGERS

Auger Drives with Bit up to 24"	\$115	\$330	\$995
Auger Extra Bits up to 24"	\$60	\$195	\$500
Auger Extra Bits 30" to 36"	\$85	\$295	\$750
Auger Extension	\$25	\$70	\$200

BROOMS

Broom, Angle 84"	\$250	\$775	\$2,235
Broom, Pickup 72"	\$250	\$775	\$2,235



Model	Carry Weight Minimum	Carry Weight Maximum	Flow Supply	Day	Week	4 Weeks
HP350	3,100 lb	11,000 lb	7 – 12 g/m	\$225	\$675	\$2,025
HP550	3,750 lb	14,300 lb	8 – 16 g/m	\$250	\$750	\$2,235
HP800	6,650 lb	17,600 lb	14 – 22 g/m	\$290	\$865	\$2,585
HP1000	7,750 lb	23,100 lb	14 – 24 g/m	\$470	\$1,410	\$4,220
HP1100	8,850 lb	26,450 lb	16 – 27 g/m	\$470	\$1,410	\$4,220
HP1250	11,050 lb	30,850 lb	19 – 28 g/m	\$485	\$1,445	\$4,320
HP1500	14,400 lb	35,200 lb	19 – 29 g/m	\$500	\$1,520	\$4,580
HP2000	26,500 lb	48,500 lb	23 – 25 g/m	\$720	\$2,155	\$6,455
HP3000	33,000 lb	55,000 lb	30 – 40 g/m	\$830	\$2,485	\$7,505
HP4000	35,500 lb	61,500 lb	34 – 43 g/m	\$920	\$2,945	\$8,715
HP5000	42,000 lb	70,500 lb	39 – 48 g/m	\$1,050	\$3,145	\$9,490
HP6000	46,500 lb	83,500 lb	43 – 53 g/m	\$1,135	\$3,380	\$10,150
HP7500	51,000 lb	92,000 lb	48 – 61 g/m	\$1,440	\$4,305	\$12,910

¹Skid steer, track loader, or compact excavator • ²Backhoe or midi excavator • ³130 – 160 lb excavator class
⁴160 – 225 lb excavator class • ⁵330 – 470 lb excavator class

Breakers



Construction Equipment

Excavators



Model	Operating Net HP	Weight	Max Dig Depth	Day	Week	4 Weeks
CX15EV	21HP	3,186 lb	6' 9"	\$400	\$1,200	\$3,600
CX17C	16.8 HP	3,910 lb	7' 3"	\$235	\$675	\$1,955
CX26C	24.8 HP	5,520 lb	7' 11"	\$270	\$735	\$2,130
CX30C	24.8 HP	6,020 lb	8' 2"	\$295	\$870	\$2,520
CX37C	24.4 HP	7,990 lb	10' 3"	\$350	\$1,035	\$3,010
CX57C	66.9 HP	12,050 lb	12' 6"	\$375	\$1,125	\$3,315
CX60C	64.7 HP	12,940 lb	11' 9"	\$375	\$1,125	\$3,315
CX75C SR	55.2 HP	16,200 lb	13' 7"	\$495	\$1,490	\$4,405
CX80C	55.2 HP	18,800 lb	13' 9"	\$495	\$1,490	\$4,405

SR = Short Radius • Breakers—see page 5 for breaker sizes and pricing

CASE
CONSTRUCTION



Model	Net HP	Operating Weight	Max Dig Depth	Day	Week	4 Weeks
CX130D	102 HP	29,131 lb	18' 3"	\$645	\$1,885	\$5,460
CX140E	102 HP	29,900 lb	19' 10"	\$655	\$1,900	\$5,515
CX145D SR	102 HP	32,100 lb	18' 1"	\$665	\$1,930	\$5,600
CX160D	112 HP	38,400 lb	19' 11"	\$670	\$1,930	\$5,600
CX170E	121 HP	38,400 lb	21' 4"	\$685	\$1,960	\$5,685
CX190E	121 HP	41,000 lb	21' 4"	\$685	\$1,960	\$5,685
CX210D	160 HP	48,859 lb	20' 1"	\$750	\$2,180	\$6,285
CX220E	162 HP	52,000 lb	21' 9"	\$800	\$2,325	\$6,735
CX245D SR	160 HP	56,900 lb	20' 1"	\$880	\$2,545	\$7,390
CX250D	177 HP	56,909 lb	22' 8"	\$880	\$2,545	\$7,390
CX300D	207 HP	67,271 lb	22' 9"	\$1,135	\$3,270	\$9,485
CX350D	268 HP	82,483 lb	24' 1"	\$1,400	\$4,070	\$11,800
CX365E SR	205 HP	78,600 lb	21' 1"	\$1,245	\$3,615	\$10,485
CX490D	362 HP	109,300 lb	25' 4"	\$1,795	\$5,190	\$15,060

SR = Short Radius, RT = Rubber Track, LR = Long Reach • Breakers—see page 5 for breaker sizes and pricing

CASE
CONSTRUCTION



ADDITIONAL ATTACHMENT

Model	Day	Week	4 Weeks
Krypto Klaw for 200 series	\$550	\$1650	\$4950



Model	Net HP	Operating Weight	Max Dig Depth	Day	Week	4 Weeks
TB210R	11.7 HP	2,535 lb	5' 9"	\$235	\$825	\$2,085
TB216	15 HP	3,902 lb	7' 10"	\$260	\$840	\$2,220
TB20E	173 V	4,255 lb	7'10"	\$245	\$800	\$2,110
TB225R	19.6 HP	4,993 lb	8' 5.5"	\$325	\$925	\$2,665
TB230	24.4 HP	6,360 lb	9' 3"	\$295	\$870	\$2,520
TB235-2R	29.8 HP	7,650 lb	11' 2"	\$350	\$1,035	\$3,010
TB335	24.4 HP	7,970 lb	10' 6"	\$330	\$985	\$2,865
TB240	35.8 HP	8,570 lb	11' 4"	\$350	\$1,035	\$3,010
TB350	41.7 HP	11,235 lb	11' 8.8"	\$355	\$1,070	\$3,155
TB250-2	39 HP	11,288 lb	12' 5"	\$375	\$1,125	\$3,315
TB260	47.6 HP	12,645 lb	12' 9"	\$375	\$1,125	\$3,315
TB370	56.9 HP	14,850 lb	13' 5"	\$405	\$1,310	\$3,920
TB290	69.2 HP	18,630 lb	15'	\$495	\$1,490	\$4,405

MINIMAL TAIL SWING

TB257FR	52.3 HP	12,930 lb	12' 9.5"	\$355	\$1,075	\$3,160
TB280FR	69.2 HP	18,810 lb	14' 11"	\$495	\$1,490	\$4,405
TB2150CL	114 HP	34,215 lb	19' 9"	\$655	\$1,900	\$5,515

Breakers—see page 5 for breaker sizes and pricing

TAKEUCHI

Construction Equipment

Compact wheel Loader

CASE
CONSTRUCTION

Model	Net HP	Operating Weight	Max Heaped Bucket Capacity	Day	Week	4 Weeks
21F	58 HP	11,272 lb	0.92 yd ³	\$335	\$1,005	\$3,020
21F XT	58 HP	10,979 lb	0.92 yd ³	\$335	\$1,005	\$3,020
121F	64 HP	11,618 lb	1.05 yd ³	\$335	\$1,005	\$3,020
121F XT	64 HP	11,067 lb	1.05 yd ³	\$335	\$1,005	\$3,020
221F HS	74 HP	12,547 lb	1.2 yd ³	\$395	\$1,180	\$3,530
321F HS	74 HP	13,303 lb	1.3 yd ³	\$395	\$1,180	\$3,530

XT = Tool Carrier, HS = High Speed



Wheel Loaders

CASE
CONSTRUCTION

Model	Net HP	Operating Weight	Max Heaped Bucket Capacity	Day	Week	4 Weeks
521G	142 HP	24,035 lb	2.3 yd ³	\$555	\$1,605	\$4,660
521G XT	142 HP	25,384 lb	2.3 yd ³	\$555	\$1,605	\$4,660
521G XR	142 HP	24,572 lb	2.3 yd ³	\$555	\$1,605	\$4,660
621G	162 HP	27,695 lb	2.7 yd ³	\$605	\$1,755	\$5,085
621G XT	162 HP	29,076 lb	2.7 yd ³	\$605	\$1,755	\$5,085
621G XR	162 HP	28,483 lb	2.7 yd ³	\$605	\$1,755	\$5,085
721G	195 HP	32,492 lb	3.50 yd ³	\$695	\$2,000	\$5,795
721G XT	195 HP	33,392 lb	3.50 yd ³	\$695	\$2,000	\$5,795
721G XR	195 HP	32,851 lb	3.50 yd ³	\$695	\$2,000	\$5,795
821G	230 HP	40,057 lb	4.25 yd ³	\$775	\$2,240	\$6,495
821G XR	230 HP	40,648 lb	4.25 yd ³	\$775	\$2,240	\$6,495
921G	255 HP	45,071 lb	4.75 yd ³	\$1,100	\$3,190	\$9,235
921G XR	255 HP	45,651 lb	4.75 yd ³	\$1,100	\$3,190	\$9,235
1021G	320 HP	55,282 lb	5.50 yd ³	\$1,390	\$3,920	\$11,695
1021XR	320 HP	55,282 lb	5.50 yd ³	\$1,390	\$3,920	\$11,695
1121G	347 HP	61,650 lb	6.25 yd ³	\$1,680	\$4,845	\$14,045
1121G XR	347 HP	63,443 lb	6.25 yd ³	\$1,680	\$4,845	\$14,045

FORK ATTACHMENT

XT = Tool Carrier, XR= Extended Reach • Quick couplers available, add 15%

\$150 \$450 \$1,350



Rough Terrain Forklifts

CASE
CONSTRUCTION

Model	Type	Operating Weight	Capacity	Reach	Day	Week	4 Weeks
586H	Standard	13,682 lb	6,000 lb	15'	\$300	\$870	\$2,555
588H	Standard	16,102 lb	8,000 lb	15'	\$325	\$980	\$2,935



Construction Equipment

Single Drum – Sheepsfoot/Smooth Rollers



CASE
CONSTRUCTION

Model	Rated HP	Operating Weight	Drum Width	Day	Week	4 Weeks
SV207E	75 HP	15,400 lb	66"	\$560	\$1,625	\$4,700
SV208D	75 HP	15,100 lb	66"	\$570	\$1,650	\$4,775
SV211E PF	134 HP	27,650 lb	84"	\$610	\$1,765	\$5,135
SV213E	134 HP	25,630 lb	83.9"	\$600	\$1,735	\$5,055
SV215E	154 HP	33,420 lb	83.9"	\$625	\$1,820	\$5,270
SV216D	154 HP	31,640 lb	84"	\$635	\$1,850	\$5,350
SV217E	154 HP	36,500 lb	83.9"	\$625	\$1,820	\$5,270

Double Drum Vibratory/Asphalt Rollers



CASE
CONSTRUCTION

Model	Rated HP	Operating Weight	Drum Width	Day	Week	4 Weeks
DV23E	33.5 HP	5,270 lb	39.4"	\$250	\$720	\$2,095
DV26E	31 HP	5,842 lb	47.2"	\$315	\$910	\$2,645
DV36E	43.5 HP	8,290 lb	51.2"	\$500	\$1,445	\$4,180
DV45E	40 HP	10,296 lb	54.3"	\$500	\$1,445	\$4,180
DV209D	100 HP	21,080 lb	71"	\$560	\$1,615	\$4,690
DV210D	100 HP	22,930 lb	71"	\$590	\$1,715	\$4,965

DYNAPAC

Model	Rated HP	Operating Weight	Drum Width	Day	Week	4 Weeks
CC3200	100 HP	18,000 lb	72.8"	\$580	\$1,685	\$4,890

Trench Rollers – Remote Control



BOMAG
FAYAT GROUP

Model	Rated HP	Operating Weight	Drum Width	Day	Week	4 Weeks
BMP8500	17.2 HP	3,516 lb	33.5"	\$250	\$750	\$2,430

Equipped with diesel engine • Remote-controlled

Construction Equipment

Compact Utility Vehicles



MUD BUGGY

Model	Weight	Load Capacity	Day	Week	4Weeks
MBTX 2500 Track	1,640 lbs	2,500 lb	\$170	\$580	\$1,520

MINI TRACK LOADER

Model	Weight	Operating Capacity	Day	Week	4Weeks
TX1000	2,790 lbs	1,075 lbs	\$185	\$610	\$1,715
TX525	2,013 lbs	553 lbs	\$170	\$500	\$1,490
TL100 WT	3,783 lbs	1,574 lbs	\$185	\$610	\$1,685

MINI TRACK LOADER ATTACHMENTS

Description	Day	Week	4Weeks
Auger	\$85	\$250	\$750
Forks	\$50	\$140	\$390
Grapple	\$70	\$275	\$635
Power Rake	\$115	\$330	\$995
Trencher	\$85	\$275	\$855



Machine Control Systems



Model	Day	Week	4 Weeks
LMR240	\$60	\$85	\$220
LMR360	\$115	\$140	\$420
DM200	\$115	\$140	\$420
CoPilot	\$170	\$330	\$555
iCON Grade iGD2, 2D System	\$635	\$1,600	\$3,640
iCON Grade iGD3, 3D System	\$695	\$1,770	\$3,970
Base Station & Rover Jobsite Setup (one month minimum)	\$830	\$2,210	\$4,415



Lasers



104" Model	Distance	Day	Week	4 Weeks
Rugby Beam Laser	3,000'	\$90	\$220	\$660
Rugby Grade Laser	2,500'	\$60	\$170	\$500



Trench Shielding and Shoring Equipment

Shoring Products for Sale or Rent

Luby Shoring provides a wide selection of standard and custom trench shielding and shoring options. Our equipment is cost effective and versatile, and it is relied upon by underground utility professionals, municipalities, and private contractors. All products are Professional Engineer certified to help you meet OSHA's excavation and trench safety standards.

Steel Trench Shields & Spreader Pipe

Double Wall Steel Trench Shields

- Reinforced top rails
- Adjustable and stackable
- Four point lifting system
- Spreaders for Steel Trench Shields
- 4 and 5 pipe independent spreader sets
- 24" to 240" length



Build-A-Box Modular Aluminum Trench Shield System

- Telescoping spreader sets in a variety of sizes
- Stackable with Build-A-Box
- Greatest strength to weight ratio in the industry
- Assembled in minutes
- Changes can be made on the spot to adjust to any job with light to extreme conditions

Slide Rail System

A universal component steel trench shielding system

- Standard 4 sided pit saves time and money with installation and excavation completed together
- ClearSpan™ System incorporates special waters for larger unobstructed four sided working pits
- Linear or four sided multi-bay is ideal when installing next to existing utilities and structures

Manhole Shields



- Designed to be used in two, three, or four sided configurations with an independent spreader system
- Can also be used with the 6" schedule 80 spreader

Hydraulic Trench Shoring



- Two 8" wide rails ranging in size from 1.5' to 16" tall
- 2" diameter hydraulic cylinders
- Oversleeve to protect cylinder
- Fittings and hose
- Cylinder extension system
- 5 gal pump can (plastic or steel)
- Biodegradable shoring fluid
- Release tool & removal hook
- Chudoform (4' x 8' sheets)
- Finger guards

Stone Mizer



Bedding Material Containers

- From 36" x 60" x 140" to 60" x 90.5" x 224"
- Holds 4,210 – 14,600 lb



www.lubyshoring.com • 636-660-SHOR (7467)

Luby Shoring Services, LLC is independently owned and operated

Rental Terms and Conditions



Credit Approval

A Credit Application must be submitted and approved for any open account rentals. For new accounts or cash only accounts, a deposit will be required and a credit card received and charged with prior approval in the amount of the twice expected rental.

Freight Charges

Luby Equipment Services will allow pickup and return at the closest Luby branch. Loading, unloading, dismantling, or assembling will be an additional charge. Luby Equipment Services offers delivery and pickup to your job.

Time Basis and Rates

A one-day rental is based on eight (8) hours maximum use within a 24-hour period. A one-week rental will allow 40 hours of use in even (7) days, and a 4-week rental will allow 160 hours of use in a 28-day period. Additional hours and late returns will be charged at an overtime rate of 1/6 of the daily rate. If operating on double shift, rates will reflect 1.5 times the applicable rates. Triple shift operation will reflect 2 times the applicable rate. Weekend rentals are available from 3:00 pm Friday until 9:00 am Monday morning with an 8-hour maximum operating usage. Additional hours and late returns will be charged at an overtime rate of 1/6 of the daily rate. Holiday rentals are available from 3:00 pm the day prior to the holiday until 8:00 am the following business days after the holiday. Eight (8) hours will be the maximum operating time available. Additional hours and late returns will be charged at a normal time rate of 1/6 of the daily rate.

Rental Period

The rental period begins when equipment leaves the lessor's yard and ends when the equipment is returned to the lessor's yard. On out-of-town shipments, rentals start the day of the Bill of Lading of shipments and stop at the date of the returned Bill of Lading.

Damage Waiver

Liability—Coverage must be assured for all risks and liability, from loss or all damages, for injuries or death to persons or destination of property arising out of the use, possession, or transportation of rental equipment.

Physical Damage—Rental equipment must be insured for full value against all risks or physical damage and loss, including vandalism and theft. Lessee must carry product liability coverage for all risk and liability. The lessee's Certificate of Insurance must be provided prior to the delivery of equipment. Luby Equipment Services must be named as additional insured in all Certificates of Insurance.

Luby Equipment Services Damage Waiver—Luby Equipment Services can provide physical damage waiver insurance coverage. If this is chosen, an additional cost will apply. This will eliminate your need to supply a Certificate of Insurance. The premium will be as noted on the rental contract.

This coverage allows a deductible equal to the monthly rental rate, which is the responsibility of the lessee, as part of the Luby Equipment Services Damage Waiver Policy.

Rental Contract/Delivery Ticket

A rental contract must be signed and executed on every rental transaction, with all pertinent data furnished prior to the release of the rental equipment. Lessee may be required to sign a UCC financing statement, which protects Luby Equipment Services' security in the rented equipment.

Fuel, Repairs, and Maintenance

Luby Equipment Services' rental equipment will be delivered to the lessee in good operating condition and should be returned to lessor in the same condition as delivered, less normal wear. Any condition that the lessee finds to be unsatisfactory must be indicated before the rental period begins. Lessee is responsible for the normal maintenance and lubrication, such as oil changes and filters, during the rental period. The equipment will be delivered full of fuel. Fuel used will be charged. All repairs required due to abuse or negligence will be charged to the lessee upon return of damaged rental equipment. All charges for abnormal cleanup will also be charged to the lessee.

If the rental unit is converted into a sale, all non-warrantable repairs and maintenance made during the rental period will be added to the conversion price.

www.lubyequipment.com

Construction Equipment & Power Generation Locations

Missouri



Saint Louis*
2300 Cassens Dr.
Fenton, MO 63026
636-343-9970
Rental Hotline
636-660-7900



Cape Girardeau*
199 Airport Rd.
Cape Girardeau, MO 63702
573-334-9937



O'Fallon*
2999 Mexico Rd.
O'Fallon, MO 63366
636-332-9970



Springfield*
1155 S. Kansas Expressway
Springfield, MO 65807
417-862-9275

Illinois



Fairmont City*
921 N. 1st St.
Fairmont City, IL 62201
618-397-9971



Quincy*
2625 North 24th St.
Quincy, IL 62305
217-222-5454



Springfield*
4375 Camp Butler Rd.
Springfield, IL 62707
217-744-2233

Arkansas



Harrison*
302 W. Industrial Park Rd.
Harrison, AR, 72601
870-741-8900

Oilfield Division Location

West Virginia



Buckhannon
271 Weatherford Blvd.
Buckhannon, WV 26201
304-473-0100



*Authorized Case Dealer

CASE
CONSTRUCTION

FECON TAKEUCHI

TORO

Leica
Geosystems

INDECO
YOUR PARTNERS IN DEMOLITION

STANLEY

VIRNIG
attachments

BOMAG
FAYAT GROUP

TOWMASTER
TRAILERS

Eager Beaver
Trailers