

HIGH PERFORMANCE ROTORS

BUILT FECON TOUGH



FGT

Versatile smooth drum rotor system with tooling options for various application. Lacing pattern maximizes energy transfer into the material while optimizing tool wear.

Double Carbide standard



The perfect balance of performance, wear life, and durability, the Double Carbide is the standard tool offered in FGT rotors to work in a wide range of applications.

Viking Sword®



Double sided and easily flipped for a brand new cutting edge. This tool is faster at cutting, resulting in a finer finished product. A tapered tool body allows chip material to flow efficiently.

High Abrasion



Carbide wear plates are added to the body of the Standard Double Carbide tool, extending useful life in highly abrasive conditions by slowing wear to the body.

Stone Tool



Ideal for areas where rock cannot be avoided, the FGT Stone Tool provides superior durability and wear life in more severe conditions.



DCR

Depth Control Rotor limits tool bite which creates consistent chip sizing and less HP draw from carrier. Ideal for stringy/fibrous material or when a finer finished product is required.

Viking Axe® standard



Double sided and easily flipped for a brand new cutting edge. The Viking Axe has a thick knife edge optimized for cutting stringy and fibrous vegetation.

Viking Sword®



Double sided and easily flipped for a brand new cutting edge. This tool is faster at cutting, resulting in a finer finished product. A tapered tool body allows chip material to flow efficiently.



FMX

Split ring rotor with knife tools designed to efficiently mulch while maintaining higher rotor RPMs.

Cubit Knife standard



Double sided and easily flipped for a brand new cutting edge. This tool is faster at cutting, resulting in a finer finished product. A tapered tool body allows chip material to flow efficiently.

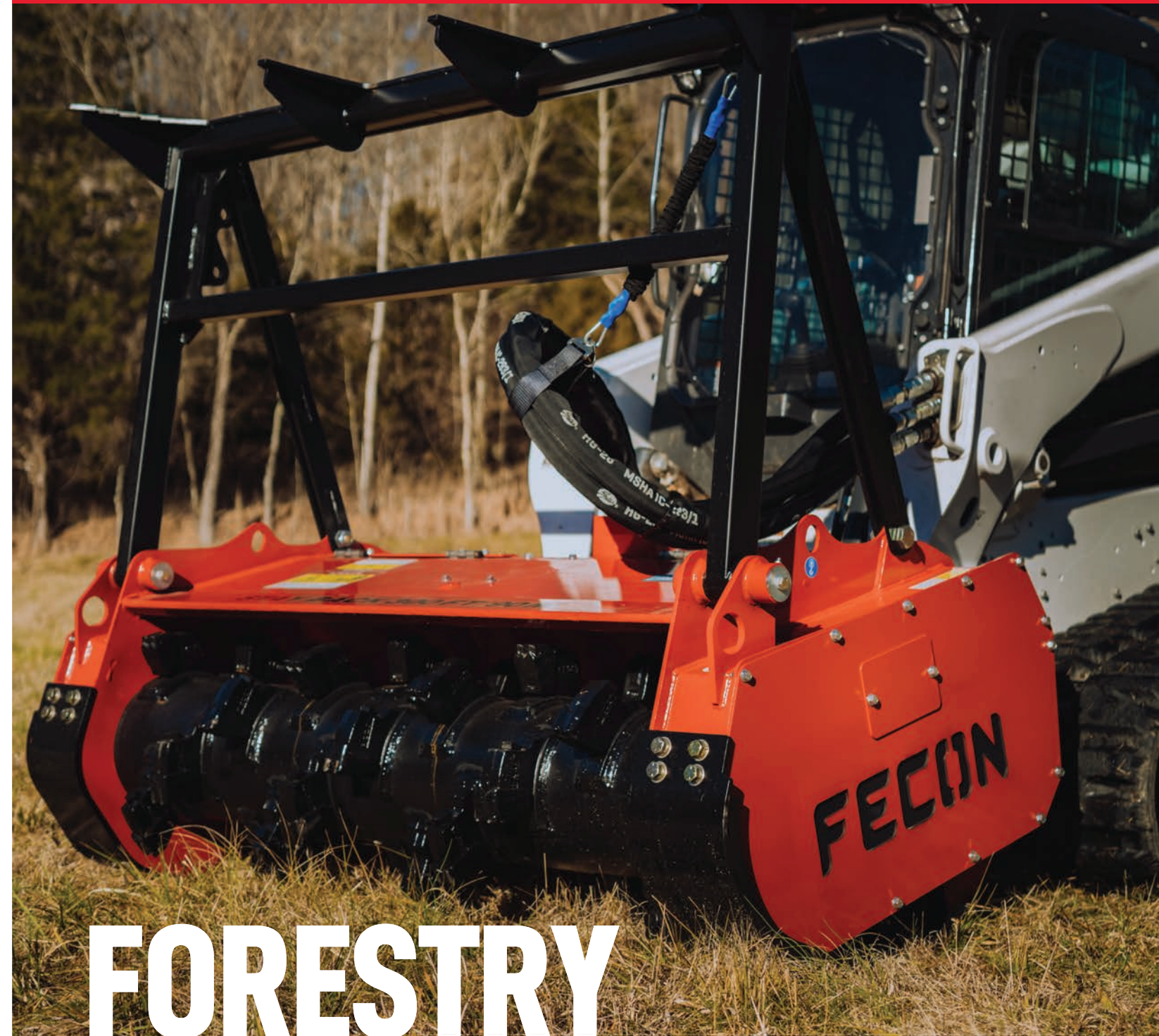
Cubit Carbide



Versatile tool for shredding material and improved durability. Ideal for applications that require ground engagement.

BULL HOG®

FECON®



FORESTRY MULCHERS

BULL HOG®

fecon.com

800 528 3113

sales@fecon.com

+1 513 696 4430



Whether you are buying, renting, or servicing your mulching equipment, FECON has solutions that focus on your success. Operator driven design with a global network that is woven into every product.

- Operators cab must be protected with both properly maintained 1/2" Polycarbonate Glass (or equal) and Falling Object Protection.
- Certain guarding and features may have been removed for illustrative purposes, always run with proper guarding.
- Weights may vary based on options.
- Specifications subject to change without notice.
- Photographs may have been altered for marketing purposes.
- Always insure that your carrier manufacturers safety features (including Falling Object Protection, and Roll-Over Protection) meet your job safety requirements.
- SAFETY IS THE RESPONSIBILITY OF THE OPERATOR.
- Pictures may contain optional accessories

FECON.COM

800 528 3113

THE BULL HOG® ADVANTAGE

DURABILITY

- Industry leading severe-duty body construction.
- Engineered and built to withstand all types of mulching conditions.
- Heavy steel materials and quality welding process provide strength and longevity.

PERFORMANCE

- Variable 2 speed motor option automatically adjusts to maximize rotor speed & torque to changing material loads.
 - ✓ For lighter material loads, higher RPM means more bites per second and finer material sizing.
 - ✓ With heavier material the Bull Hog® delivers more rotor torque keeping the rotor turning when other heads may stall.
- Field tested and proven to be the most productive heads available.

VERSATILITY

- Available from 50 - 600HP, Bull Hog® mulchers are designed for any machine and application.
- Available for Compact Track Loaders, Skid Steers, 5-45 ton Excavators, PTO Tractors and more!
- With four rotor systems and a variety of tool options Bull Hogs® can be configured for regional or specific jobsite conditions.



FECON® MULCHING EQUIPMENT CLEARING THE WAY



BULL HOG® SKID STEER / CTL

HINGED MOTOR COVERS

- Easy service
- Access without tools

PUSH BAR OPTIONS

- Pin-on
- Serrated ears direct material to better feed the mulcher

BOLT-ON SKID SHOES

- AR400 steel
- Less plowing of material for more uniform final results



BULL HOG® HYDRAULIC

BODY CONSTRUCTION

- Severe duty
- Standard duty
- Durable long-lasting performance

PUSH BAR

- Rugged fixed position
- Optional hydraulic tilting

BOLT-ON SKID SHOES

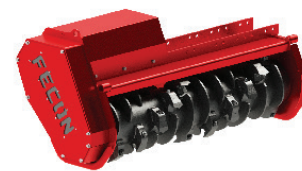
- AR400 steel
- Can be adjusted for desired ground engagement

TRAP DOOR

- Helps contain debris
- Achieve finer sizing

CTL Bull Hogs	Working Width	Overall Width	Weight	Flow Range	FGT Tools	DCR Tools
BH62SS	50"	65"	2450 lbs	30 - 45 gpm	24	20
BH74SS	61"	76"	2790 lbs	30 - 45 gpm	30	24
BH85SS	72"	87"	3140 lbs	30 - 45 gpm	36	28
BH74SD	61"	76"	2750-2800 lbs	27 - 75 gpm	30	24
BH85SD	72"	87"	2970-3050 lbs	27 - 75 gpm	36	28

Hydraulic Bull Hogs	Working Width	Overall Width	Weight	Flow Range	FGT Tools	DCR Tools
RK8620	86"	101"	4800-4950 lbs	50 - 150 gpm	48	36
BH120H	86"	101"	4800-4950 lbs	50 - 150 gpm	48	36
BH230H	100"	117"	6750-6850 lbs	50 - 150 gpm	48	42
BH300H	89"	109"	7710-7950 lbs	80-210 gpm	48	42



BULL HOG® EXCAVATOR

BODY CONSTRUCTION

- 15 - 45 ton excavators BH40EXC, BH80EXC & BH200EXC
- 3/4" steel body construction
- SEVERE duty bearings
- Variable displacement

MOUNTS

- Quick attach or pin-on
- Easily change mounts for different excavators with the bolt-on interface

ROTOR EXPOSURE

- Cut through standing trees
- Mulch slash piles
- Grind to the surface

Model	EXC SIZE (Metric Ton)	Working Width	Overall Width	Approx Weight	Approx Flow Range	FGT Tools	DCR Tools
FMX36	5 - 10 T	36"	44"	850 lbs	12 - 40 gpm	18	-
FMX50	5 - 10 T	50"	58"	1050 lbs	12 - 40 gpm	22	-
BH47EXC	12 - 20 T	37"	50"	2400 lbs	27 - 50 gpm	18	14
BH62EXC	12 - 20 T	50"	63"	2650-2750 lbs	27 - 75 gpm	24	20
BH40EXC	15 - 45 T	36"	51"	3150-3250 lbs	30 - 75 gpm	18	14
BH80EXC	20 - 45 T	56"	71"	3950-4300 lbs	38 - 150 gpm	30	22
BH200EXC	20 - 45 T	59"	77"	5375-5500 lbs	40 - 150 gpm	30	28

