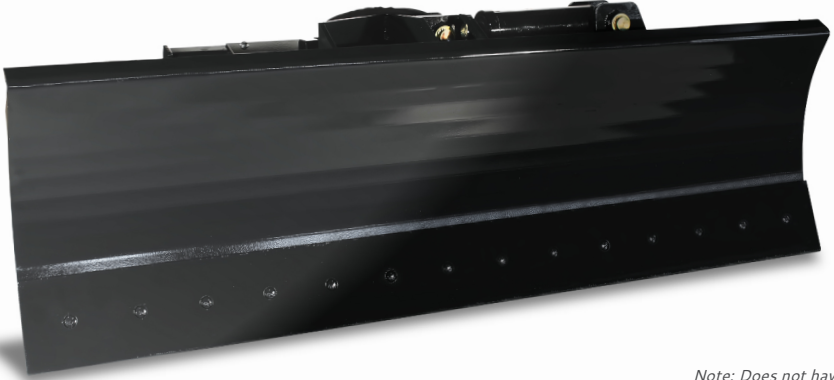


DOZER BLADE - 6 WAY

Available widths 72", 84" & 96"

Heavy-duty frame, 3/8" thick moldboard and adjustable skid shoes.



Note: Does not have a trip edge or trip moldboard.

25.8"
BLADE HEIGHT

1510-1640 LB
OVERALL WEIGHT
(VARIES BY MODEL)

GREATER THAN
1800 LB
LOADER OPERATING CAPACITY

1. ANGLE THE BLADE 30° LEFT OR RIGHT & TILT 10° FROM INSIDE THE CAB
2. NITROSTEEL® CYLINDER RODS & TEFLON® COATED BUSHINGS ON ALL PIVOTS
3. 5/8" x 8" REVERSIBLE STEEL BOLT-ON EDGE



MODEL	DZR72	DZR84	DZR96
Overall Width (in.)	74.0	86.0	98.0
Height: Overall / Blade (in.)		28.1 / 25.8	
Overall Depth (in.)		38.0	
Blade Angle (degrees)		(+/-) 30	
Width at Full Angle (in.)	64.1	74.5	84.9
Blade Oscillation (degrees)		(+/-) 10	
Moldboard Thickness (in.)		0.375	
Cutting Edge (in.)		5/8 x 8 Bolt-on	
Cylinder Bore / Stroke (in.)		3.5 / 8.0	
Pins: Cylinder / Hinge / Oscillation (in.)		1.563 / 2.125 / 2.125	
Approximate Weight (lbs)	1510	1575	1640
Recommended Loader Capacity		Greater than 1800 lbs	