

**CASE**  
CONSTRUCTION

**CASE**  
**EXCAVATORS**





# SPEED, POWER, RESPONSIVENESS AND RELIABILITY. **RELOADED.**

CASE excavators have a long history of smooth control, brute power and comfort. From world-famous hydraulics to adjustable controls and configurations, fuel efficiency and low total cost of ownership — new CASE E Series models build on this and take it a step further with a revolutionized operator experience. CASE excavators are built for the operator.

From conventional tailswing designs to short-radius excavators, heavy production machines and smart mid-sized utility kings — CASE brings the digging power, precision and comfort to help you and your business get more done, faster.





**MID-SIZED EXCAVATORS**

CX75C SR | CX80C

**FULL-SIZED EXCAVATORS**

CX140E | C170E | CX190E  
CX220E | CX260E | CX300E

**SHORT-RADIUS EXCAVATORS**

CX145D SR | CX245D SR | CX365E SR

**SPECIALTY EXCAVATORS**

CX290D MATERIAL HANDLER  
CX290D SCRAP & RECYCLING

**HEAVY EXCAVATORS**

CX350D | CX490D | CX500D | CX750D



# THE WORKHORSES

New CASE E Series excavators are built for fast cycle times, fuel efficiency, extremely smooth and responsive control, and an operator experience that's second-to-none. From the residential-friendly 28,900-pound CX140E to the 67,000-pound CX300E that's equally as comfortable in the quarry as it is on the big highway job — the core CASE excavator lineup will go toe-to-toe with all challengers.

- 
- + Massive new 10-inch LCD operator control center
  - + Four working modes with up to 10 independent throttle settings
  - + All-new hydraulic control customizations
  - + New FPT Industrial engines deliver improved power, response and torque (model dependent)
  - + Extended service intervals, 1,000-hour on engine oil & fuel filters on FPT Industrial engines
  - + Greater workstation adjustability
  - + CASE SiteConnect Module: allowing for remote diagnostics and software updates



**MASSIVE ALL-NEW  
10-INCH LCD DISPLAY**

From new configurable buttons and deeper access to machine data, to eye-popping 270-degree camera views to the rear and sides of the machine with the optional CASE Max View™ display, the all-new operator interface puts you in total control.



**Protected by CASE ProCare:**

- + 3-year/3,000-hour full machine factory warranty**
- + 3-year/2,000-hour planned maintenance**
- + 3-year SiteWatch telematics subscription**





# THE NEW CX190E

Just north of 40,000 pounds capable of putting up production-level numbers while still being easy to own, operate and transport. The result is The all-new CASE CX190E excavator is a sweet spot machine that surpasses its size class in power, productivity and performance. All while delivering the premium operator experience of the new CASE E Series excavators.



**EMISSIONS SIMPLE**

New CASE E Series excavators feature an innovative combination of diesel oxidation catalyst (DOC), selective catalytic reduction (SCR) and particulate matter catalyst technologies that further provide greater fuel efficiency, systems reliability and no lifetime after-treatment replacement or mechanical service over time. The system features 13 patents that ensure effective emissions compliance and performance in all working environments.

# A FOUNDATION OF POWER

New FPT Industrial engines bring CASE E Series excavators\* even more power, performance and fuel efficiency! This includes increased torque, horsepower, transient response and emissions simplification — as well as extended service intervals. These engines help make CASE excavators easy to own, easy to maintain and extremely efficient.

\*Not available on the CX365E SR; results vary by machine and application.







# TOTAL OPERATOR CONTROL

Revolutionized. Reloaded. Re-energized. CASE E Series excavators deliver new control and working features that elevate the operator experience to entirely new levels. Greater power, speed, precision, control configuration and customization — all within your reach.



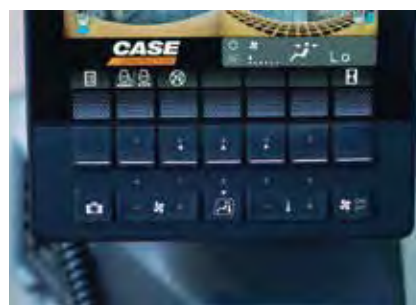
### GREATER HYDRAULIC CONTROL

All-new Hydraulic Flow Control Balance customizes the priority of hydraulic flow used for arm in and boom up movements, and for arm in and swinging movements. This makes the excavator even more responsive and efficient based on the type of work and operator preference.



### NEW OPERATOR MODES

Four new work modes (SP for Super Power, P for Power, E for Eco and L for Lifting) are available in a range of up to 10 throttle settings that allow operators to dial in performance to their work. The new Eco mode drives lower fuel consumption by as much as 18 percent compared to previous CASE excavators\*.



### CONFIGURE YOUR CONTROLS

The new display allows for excellent control customization with five configurable buttons that can be set to each operator's most-used functions — including (but not limited to) fuel consumption, machine information, auxiliary hydraulics and emissions controls.



### SIMPLIFIED ATTACHMENT PERFORMANCE

Store up to 10 attachments (one-way and two-way), and set the power going to the attachment within the recommended specs of the attachment. This leads to optimal attachment performance, and prevents damage or downtime related to overloading the attachment.



### A WORKSTATION BUILT FOR YOU

A new suspended operator station locks the seat and console together so that, no matter the size of the operator, they have the same experience in terms of orientation to the armrests and the controls. Both the console and the armrest can now be further adjusted to meet operator preference.



### THE POWER OF MACHINE CONTROL

OEM-fit 2D and 3D machine control solutions ensure the optimal combination of machine and solution is installed and tested by CASE certified precision field specialists. It also simplifies the acquisition process by grouping the technology with the purchase of the machine — placing the financing or lease approval, rate and payment in a single package.

\*Results will vary by machine and application.







# GET MORE DONE KEEP MORE LANES OPEN

The all-new CX365E SR is a short-radius excavator weighing in at more than 78,600 pounds. Built for road and bridge construction, heavy civil work and any environment where you need heavy earthmoving skills in a tight working envelope — the CX365E SR delivers big machine productivity and extreme operator satisfaction.

Even better? It has all of the operator experience enhancements of the new E Series excavator lineup, including:

- + **Massive new 10-inch LCD control center**
- + **Four working modes with 10 independent throttle settings**
- + **Ergonomic operator workstation adjustability**
- + **Improved hydraulics with all-new Hydraulic Flow Control Balance**





# UP CLOSE AND PRODUCTIVE

The CASE CX145D SR and CX245D SR short-radius excavators hold steady in the CASE excavator lineup with big digging and lifting power, extremely smooth and responsive controls, a large and comfortable workstation, minimal overhang for working up against structures or on the side of the road — all backed and supported by your CASE dealer and CASE ProCare.

**Big and powerful up front. Skinny in the back.**



**WATCH: CASE CX245D SR  
EXCAVATORS IN DEMOLITION**



**WATCH: CASE CX245D SR EXCAVATORS  
IN UTILITY CONSTRUCTION**





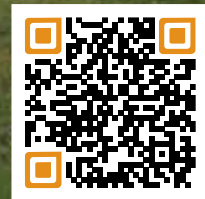






# NOT TOO BIG. NOT TOO LITTLE. **JUST RIGHT.**

CASE CX75C SR and CX80C mid-sized excavators pack massive digging power into a compact footprint. Perfect for roadside utility work, utility construction and as a universal support excavator on jobsites of all sizes, these machines are celebrated both for their digging and lifting capabilities. Super fuel efficient. Super reliable. Easy to transport.



**WATCH: SINGLE LANE SWINGIN'  
WITH THE CX75C SR**



# MASS EXCAVATION

CASE offers four excavators for the heaviest and most demanding earthmoving operations. Built with big buckets and fast cycle times, the CX350D, CX490D, CX500D and CX750D feature the power and hydraulic responsiveness CASE excavators are known for — all in a package capable of moving large volumes every day. And all supported by CASE ProCare for operations where uptime = volume = profits.



WATCH: DIGGIN' LAKES  
WITH THE CX490D



# LUMBER. SCRAP. WHATEVER YOU GOT.

From scrap yards to lumber yards — the CASE CX290D, available in Material Handler and Scrap/Recycling configurations, provide a dynamic platform for loading trucks and barges with a longer arm and boom, a variety of attachment options, and a hydraulically controlled elevating cab. An Anti-interference Device automatically prevents the boom and arm from coming into contact with the machine's structure during operation. And it features additional guarding on the cab and undercarriage designed to protect the operator and machine during tough waste and scrap handling applications.



**WATCH: CASE CX290D ANCHORS  
TIMBER LOADING OPERATION**



# EXCAVATOR UPTIME CONNECTED\*

Greater connectivity improves telematics performance, allows for remote diagnostics and software updates, and makes CASE and your local dealer the most powerful fleet management partners you have.

**SiteConnect**  Module Onboard



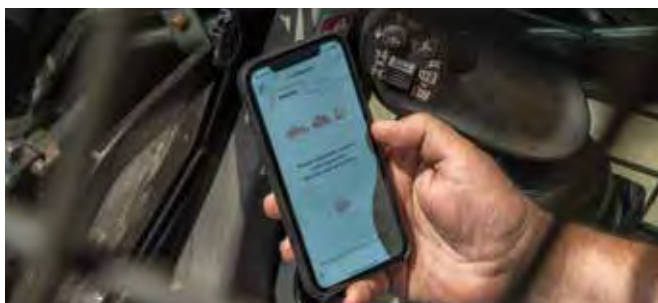
The new SiteConnect Module improves the volume, flow and integration of data to the CASE SiteWatch telematics platform — and makes remote diagnostics, code clearing and software updates possible. With the CASE SiteConnect Module, you know you're connected.

**CASE**<sup>®</sup> CONSTRUCTION | **SiteWatch**<sup>™</sup>



CASE SiteWatch telematics empowers equipment owners and operators to make important decisions about their equipment and business based on current data. CASE SiteWatch has been enhanced with an all-new dashboard, more intuitive navigation and new overview sections that spotlight critical information without requiring the user to search extensively for the data.

**CASE**<sup>®</sup> CONSTRUCTION | **SiteManager**



The CASE SiteManager App (iOS and Android) helps make quick work of downtime by allowing your CASE dealer to have remote access to your machine, diagnose a problem, clear codes and, if needed, provide a quick software update. If a field visit is required, the dealer tech arrives on site with the parts and tools needed to get that machine up and running quicker.

**CASE**<sup>®</sup> CONSTRUCTION | **UptimeCenter**



CASE technical experts monitor telematics data from your equipment\*\* to provide even more support and analysis to your operation. CASE and your local dealer service teams will work together as a powerful extension of your own fleet management activities to proactively identify possible issues with operation and performance, work together on solutions, and provide you with the support you need to optimize your uptime.

\*Select features only available on E Series excavators.  
\*\*When agreed to by the equipment owner.





## FULL LINE OF CASE ATTACHMENTS

CASE offers bucket and hammer options to fit any application:

- General Purpose (STDP)
- Heavy Duty (HDP)
- Severe Duty (XPD)
- Ditching (DTCH)
- Frost Tooth
- High Capacity
- Rock
- Thumb
- Hydraulic Breaker



### INTEGRATED HYDRAULIC QUICK COUPLER

Avoid the elements and downtime by quickly switching attachments from the comfort of the cab, thanks to an integrated hydraulic quick coupler.

## CASE<sup>®</sup> CONSTRUCTION | SiteControl

### MACHINE CONTROL FOR EXCAVATORS

Dig faster, more accurately and more confidently with CASE excavators matched with CASE SiteControl solutions powered by Leica Geosystems — including OEM-fit\* and Semi-Automatic\*\* options. You'll see immediate benefits, including lower total cost of ownership, less wear and tear on equipment, and improved labor and equipment utilization.

This includes:

- 1D Excavator Systems
- 2D Excavator Systems
- 3D Excavator Systems
- Optional OEM-fit Systems\*
- Optional Semi-Automatic Systems\*\*



### SMARTFIT™ BUCKET TEETH

CASE excavator buckets come standard with the innovative SmartFit bucket tooth system. These heavy-duty, self-sharpening teeth combine exceptional strength and unmatched ease of installation, thanks to a hammerless fastener system with reusable locking pins. Available in a full range of styles.

\*Only available on select models.  
 \*\*Only available on select models.



# BUILT FOR SERVICE EASY TO MAINTAIN

The best way to ensure daily service checks and maintenance activities are performed properly? Make it easy.

CASE is legendary for its ease of access to daily service checks and maintenance points — and the E Series excavator lineup builds further on that legacy with newly extended service intervals on critical engine oil and fuel filters to 1,000 hours\*.

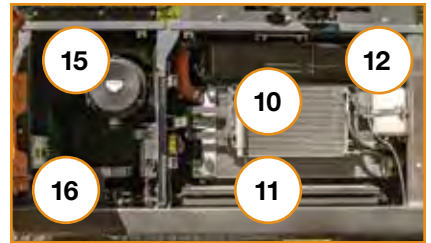
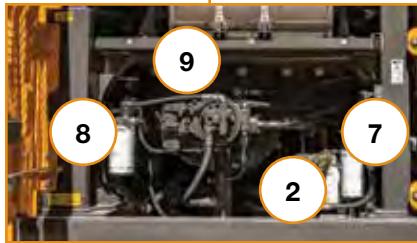
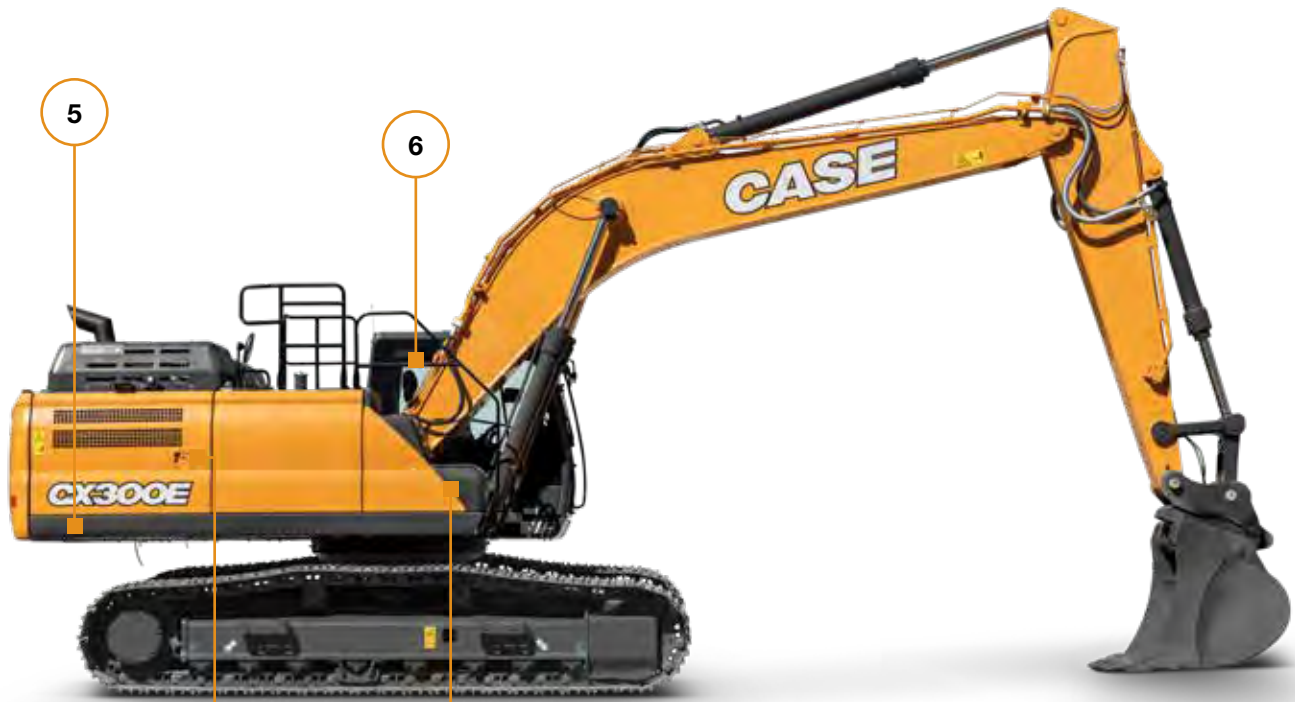
Match that with great new collaborative fleet management technologies made possible by the CASE SiteConnect Module, SiteManager App and SiteWatch telematics, and you've got all the tools you need to ensure optimal uptime.



## EASY ACCESS TO EVERYTHING

- |                        |                              |   |                     |
|------------------------|------------------------------|---|---------------------|
| ① Hydraulic fluid      | ⑤ Oil drain                  | ⑨ Engine oil filter                         | ⑬ Fuse box          |
| ② Hydraulic oil filter | ⑥ Grouped lubrication points | ⑩ Coolers with protective removable screens | ⑭ Cab air filter    |
| ③ Engine oil           | ⑦ Fuel pre-filter            | ⑪ Battery                                   | ⑮ Engine air filter |
| ④ DEF                  | ⑧ Fuel filter                | ⑫ Engine coolant                            | ⑯ Pattern changer   |







Protected by  
**ProCare**

FACTORY WARRANTY  
PLANNED MAINTENANCE  
TELEMATICS



3-yr/3000-hr  
Full-Machine Factory  
Limited Warranty\*  
**STANDARD**



3-yr/2000-hr  
Planned Maintenance  
**STANDARD**



3-yr  
SiteWatch™ Subscription  
**STANDARD**

# GO BIG, WE'VE GOT YOU COVERED

CASE ProCare is the industry's most comprehensive and standard-from-the-factory\* heavy machine support program that's as powerful as the equipment it protects. Best of all, ProCare comes standard on all new E Series and D Series excavators and keeps you covered for up to three years. It's the assurance businesses need to stay competitive, productive and profitable.







# SUPPORT COMES STANDARD



## **STRONGER PRODUCT SUPPORT SOLUTIONS**

Your CASE dealer knows how you can best maximize your equipment investment and uptime — with CASE genuine parts, expert service and a complete range of product support solutions including CASE remanufactured and All Makes parts. CASE supports better parts availability and faster deliveries through nine parts distribution centers in North America and a forecasting system to ensure that the right parts will be there when you need them. And only CASE dealers have exclusive access to the Electronic Service Tool (EST) that quickly pinpoints machine issues. Just ask your dealer for details.



## **FLEXIBLE FINANCIAL OPTIONS**

Specialized finance programs and flexible leasing packages are available for industry-leading CASE equipment while no-nonsense warranties and comprehensive protection plans ensure that your equipment is protected. As the only finance company dedicated to CASE, we offer strong products and services designed around your unique service needs.

\*See your dealer for the complete terms of CNH Industrial's Warranty and Limitations of Liability, which contains certain limits and exclusions. ProCare is a factory-fit program available on new heavy machine orders.



# DIMENSIONS AND SPECIFICATIONS

SPECIFICATIONS	CX75C SR	CX80C	CX140E	CX145D SR	CX170E
<b>Engine</b>	Isuzu AP-4LE2X	Isuzu AP-4LE2X	FPT NEF4	Isuzu AM-4JJ1X	FPT NEF4
<b>Engine Cylinders</b>	4	4	4	4	4
<b>Displacement - in<sup>3</sup> (L)</b>	133 (2.2)	133 (2.2)	274 (4.49)	183 (3)	274 (4.49)
<b>Net Horsepower - hp (kW)</b>	53.6 (40)	53.6 (40)	102 (76.4)	102 (76.4)	121 (90.4)
<b>Torque - lbf*ft (N*m)</b>	142 (193)	142 (193)	273 (370)	257 (349)	336 (456)
<b>Bucket Dig Force - lbf (kN)</b>	12,800 (56.9)	12,800 (56.9)	21,400 (95)	21,400 (95)	26,500 (118)
<b>Arm Dig Force - lbf (kN)</b>	8,800 (39.5)	8,800 (39.5)	16,600 (74)	16,600 (74)	18,800 (84)
<b>Operating Weight - lb (kg)</b>	17,400 (7 900)	18,900 (8 590)	28,900 (13 100)	32,100 (14 600)	38,400 (17 400)
<b>Drawbar Pull - lbf (kN)</b>	13,400 (59.5)	13,400 (59.5)	26,300 (117)	26,100 (116)	36,200 (161)
<b>Swing Speed - RPM</b>	10.4	10.4	14.2	12.5	11.8
<b>Travel Speed - mph (kph)</b>	3.2 (5.1)	3.2 (5.1)	3.5 (5.7)	3.5 (5.7)	3.2 (5.2)
DIMENSIONS					
<b>Overall Height</b>	9 ft 1 in (2 760 mm)	9 ft 1 in (2 760 mm)	8 ft 9 in (2 670 mm)	8 ft 10 in (2 680)	9 ft 9 in (2 960 mm)
<b>Cab Height</b>	9 ft 1 in (2 760 mm)	9 ft 1 in (2 760 mm)	9 ft 3 in (2 830 mm)	9 ft 3 in (2 820 mm)	10 ft 1 in (3 050 mm)
<b>Overall Length w/ Attachment</b>	18 ft 11 in (5 755 mm)	21 ft 11 in (6 680 mm)	25 ft 2 in (7 660 mm)	24 ft 1 in (7 350 mm)	27 ft 11 in (8 520 mm)
<b>Overall Length w/o Attachment</b>	11 ft 2 in (3 410 mm)	11 ft 2 in (3 410 mm)	13 ft 3 in (4 050 mm)	12 ft 4 in (3 760 mm)	14 ft 8 in (4 480 mm)
<b>Width of Upper Structure</b>	7 ft 5 in (2 270 mm)	7 ft 5 in (2 270 mm)	8 ft 2 in (2 490 mm)	8 ft 2 in (2 490 mm)	8 ft 3 in (2 520 mm)
<b>Track Overall Length</b>	9 ft 4 in (2 845 mm)	9 ft 4 in (2 845 mm)	12 ft 4 in (3 760 mm)	12 ft 4 in (3 760 mm)	13 ft 1 in (3 990 mm)
<b>Track Overall Width</b>	7 ft 7 in (2 320 mm)	7 ft 7 in (2 320 mm)	8 ft 6 in (2 590 mm)	8 ft 6 in (2 590 mm)	8 ft 6 in (2 590 mm)
<b>Track Shoe Width</b>	1 ft 6 in (450 mm)	1 ft 6 in (450 mm)	2 ft 0 in (600 mm)	2 ft 0 in (600 mm)	2 ft 0 in (600 mm)
<b>Upper Structure Ground Clearance</b>	2 ft 6 in (750 mm)	2 ft 6 in (750 mm)	2 ft 11 in (900 mm)	2 ft 11 in (880 mm)	3 ft 5 in (1 030 mm)
<b>Minimum Ground Clearance</b>	1 ft 2 in (360 mm)	1 ft 2 in (360 mm)	1 ft 5 in (420 mm)	1 ft 5 in (440 mm)	1 ft 5 in (420 mm)
<b>Rear Tail Swing Radius</b>	4 ft 3 in (1 290 mm)	5 ft 6 in (1 680 mm)	7 ft 2 in (2 190 mm)	5 ft 0 in (1 530 mm)	8 ft 3 in (2 520 mm)
<b>Maximum Digging Depth</b>	13 ft 7 in (4 130 mm)	15 ft 4 in (4 670 mm)	19 ft 10 in (6 050 mm)	19 ft 9 in (6 010 mm)	21 ft 4 in (6 490 mm)
<b>Maximum Reach @ Ground Level</b>	22 ft 7 in (6 890 mm)	24 ft 10 in (7 560 mm)	26 ft 10 in (8 170 mm)	19 ft 9 in (6 010 mm)	30 ft 4 in (9 240 mm)
<b>Other Available Configurations</b>			Dozer Blade (DZ)		



CX190E	CX220E	CX220E NLC	CX245D SR	CX260E	CX290D MH	CX290D SCRAP
FPT NEF4	FPT NEF6	FPT NEF6	Isuzu AR-4HK1X	FPT NEF6	Isuzu AQ-4HK1X	Isuzu AQ-4HK1X
4	4	4	4	6	4	4
274 (4.49)	411 (6.74)	411 (6.74)	317 (5.2)	411 (6.728)	317 (5.2)	317 (5.2)
121 (90.4)	162 (120.4)	162 (120.4)	160 (119.3)	179 (133.4)	177 (132.1)	177 (132.1)
336 (456)	475 (644)	475 (644)	458 (621)	474 (642)	458 (621)	458 (621)
26,500 (118)	34,621 (154)	34,600 (154)	34,600 (154)	39,566 (176)	-	-
18,800 (84)	29,900 (123)	29,900 (133)	30,000 (133)	34,396 (153)	-	-
41,000 (18 600)	52,000 (23 600)	48,900 (22 200)	56,900 (25 800)	56,909 (25 814)	72,100 (32 700)	71,700 (32 500)
42,700 (190)	42,264 (188)	42,264 (188)	45,000 (200)	44,962 (200)	44,100 (196)	44,100 (196)
11.8	11.5	11.5	11.5	10.6	11	11
2.7 (4.3)	3.5 (5.6)	3.5 (5.6)	3.1 (5.0)	3.4 (5.5)	3.5 (5.5)	3.5 (5.5)
9 ft 9 in (2 960 mm)	9 ft 8 in (2 980 mm)	9 ft 9 in (2 970 mm)	10 ft 0 in (2 980 mm)	10 ft 6 in (3 210 mm)	10 ft 0 in (2 980 mm)	11 ft 0 in (3 350 mm)
10 ft 1 in (3 070 mm)	9 ft 9 in (2 990 mm)	9 ft 11 in (3 020 mm)	10 ft 0 in (3 040 mm)	10 ft 0 in (3 050 mm)	10 ft 6 in (3 190 mm)	10 ft 6 in (3 190 mm)
27 ft 11 in (8 510 mm)	41 ft 3 in (12 580 mm)	31 ft 4 in (9 540 mm)	29 ft 3 in (8 920 mm)	32 ft 7 in (9 930 mm)	33 ft 7 in (10 230 mm)	34 ft 11 in (10 650 mm)
15 ft 0 in (4 580 mm)	16 ft 7 in (5 050 mm)	16 ft 10 in (5 120 mm)	14 ft 8 in (4 470 mm)	17 ft 5 in (5 320 mm)	17 ft 6 in (5 330 mm)	17 ft 6 in (5 330 mm)
8 ft 3 in (2 520 mm)	9 ft 1 in (2 760 mm)	8 ft 3 in (2 520 mm)	9 ft 10 in (2 990 mm)	9 ft 1 in (2 760 mm)	9 ft 9 in (2 970 mm)	9 ft 9 in (2 970 mm)
13 ft 9 in (4 180 mm)	14 ft 7 in (4 470 mm)	14 ft 7 in (4 470 mm)	14 ft 8 in (4 470 mm)	15 ft 3 in (4 650 mm)	15 ft 4 in (4 680 mm)	15 ft 4 in (4 680 mm)
9 ft 2 in (2 800 mm)	10 ft 5 in (3 190 mm)	8 ft 6 in (2 590 mm)	10 ft 6 in (3 190 mm)	11 ft 1 in (3 390 mm)	10 ft 6 in (3 190 mm)	10 ft 6 in (3 190 mm)
2 ft 0 in (600 mm)	2 ft 2 in (800 mm)	2 ft 0 in (600 mm)	2 ft 7 in (800 mm)	2 ft 7 in (800 mm)	2 ft 0 in (600 mm)	2 ft 0 in (600 mm)
3 ft 5 in (1 040 mm)	3 ft 5 in (1 040 mm)	3 ft 6 in (1 070 mm)	3 ft 4 in (1 020 mm)	3 ft 8 in (1 110 mm)	3 ft 9 in (1 140 mm)	3 ft 8 in (1 140 mm)
1 ft 4 in (440 mm)	1 ft 4 in (440 mm)	1 ft 5 in (430 mm)	1 ft 5 in (440 mm)	1 ft 5 in (440 mm)	1 ft 8 in (500 mm)	1 ft 8 in (500 mm)
8 ft 3 in (2 520 mm)	9 ft 3 in (2 830 mm)	9 ft 6 in (2 890 mm)	6 ft 4 in (1 790 mm)	9 ft 9 in (2 990 mm)	9 ft 8 in (2 950 mm)	9 ft 8 in (2 950 mm)
21 ft 3 in (6 470 mm)	21 ft 9 in (6 640 mm)	21 ft 7 in (6 620 mm)	21 ft 10 in (6 650 mm)	24 ft 4 in (7 420 mm)	11 ft 11 in (3 610 mm)	12 ft 9 in (3 890 mm)
30 ft 4 in (9 240 mm)	32 ft 6 in (9 900 mm)	32 ft 6 in (9 900 mm)	32 ft 4 in (9850 mm)	35 ft 5 in (10 790 mm)	37 ft 5 in (11 410 mm)	41 ft 11 in (12 770 mm)
	Long Reach (LR)			Long Reach (LR)		



# DIMENSIONS AND SPECIFICATIONS

SPECIFICATIONS	CX300E	CX350D	CX365E SR	CX490D	CX500D
<b>Engine</b>	FPT NEF6	Isuzu AQ-6HK1X	Isuzu AQ-6HK1X	Isuzu AQ-6UZ1X	Isuzu AQ-6UZ1X
<b>Engine Cylinders</b>	6	6	6	6	6
<b>Displacement - in<sup>3</sup> (L)</b>	411 (6.728)	475 (7.8)	475 (7.8)	600 (9.8)	600 (9.8)
<b>Net Horsepower - hp (kW)</b>	259 (193.4)	268 (200)	205 (153)	362 (270)	362 (270)
<b>Torque - lbf*ft (N*m)</b>	737 (999)	728 (988)	626 (849)	1,005 (1,363)	1,005 (1,363)
<b>Bucket Dig Force - lbf (kN)</b>	42,781 (190)	56,157 (250)	42,780 (190.3)	60,700 (270)	70,400 (313)
<b>Arm Dig Force - lbdF (kN)</b>	35,947 (160)	47,592 (212)	35,950 (159.9)	60,500 (269)	60,000 (67)
<b>Operating Weight - lb (kg)</b>	67,000 (30 400)	82,483 (37 414)	78,600 (35 700)	109,300 (49 600)	111,800 (50 700)
<b>Drawbar Pull - lbf (kN)</b>	52,380 (233)	61,373 (273)	59,300 (264)	76,200 (339)	76,000 (338)
<b>Swing Speed - RPM</b>	10	9.7	10.2	9.1	9.1
<b>Travel Speed - mph (kph)</b>	3.4 (5.4)	3.4 (5.5)	2.9 (4.7)	3.3 (5.3)	3.3 (5.3)
DIMENSIONS					
<b>Overall Height</b>	10 ft 11 in (3 320 mm)	11 ft 5 in (3 470 mm)	10 ft 11 in (3 320 mm)	12 ft 1 in (3 630 mm)	12 ft 6 in (3 800 mm)
<b>Cab Height</b>	10 ft 3 in (3 130 mm)	10 ft 5 in (3 180 mm)	10 ft 8 in (3 250 mm)	10 ft 11 in (3 320 mm)	10 ft 11 in (3 320 mm)
<b>Overall Length</b>	34 ft 10 in (10 610 mm)	36 ft 8 in (11 170 mm)	32 ft 7 in (9 930 mm)	39 ft 8 in (12 090 mm)	38 ft 4 in (11 680 mm)
<b>Overall Length w/out Attachment</b>	18 ft 8 in (5 680 mm)	19 ft 9 in (6 010 mm)	16 ft 4 in (4 980 mm)	21 ft 2 in (6 450 mm)	21 ft 2 in (6 450 mm)
<b>Width of Upper Structure</b>	9 ft 6 in (2 900 mm)	9 ft 11 in (3 030 mm)	10 ft 9 in (3 280 mm)	10 ft 0 in (3 060 mm)	10 ft 0 in (3 060 mm)
<b>Track Overall Length</b>	15 ft 11 in (4 850 mm)	16 ft 4 in (4 980 mm)	16 ft 4 in (4 980 mm)	17 ft 11 in (5 450 mm)	17 ft 11 in (5 450 mm)
<b>Track Overall Width</b>	11 ft 2 in (3 400 mm)	11 ft 2 in (3 400 mm)	11 ft 2 in (3 400 mm)	12 ft 0 in (3 650 mm)	12 ft 0 in (3 650 mm)
<b>Track Shoe Width</b>	2 ft 7 in (800 mm)	2 ft 7 in (800 mm)	2 ft 7 in (800 mm)	2 ft 11 in (900 mm)	2 ft 11 in (900 mm)
<b>Upper Structure Ground Clearance</b>	3 ft 11 in (1 190 mm)	4 ft 0 in (1 210 mm)	3 ft 11 in (1 200 mm)	4 ft 4 in (1 330 mm)	4 ft 4 in (1 330 mm)
<b>Minimum Ground Clearance</b>	1 ft 6 in (450 mm)	1 ft 7 in (470 mm)	1 ft 7 in (470 mm)	1 ft 9 in (535 mm)	1 ft 9 in (535 mm)
<b>Rear Tail Swing Radius</b>	10 ft 10 in (3 290 mm)	11 ft 8 in (3 550 mm)	6 ft 6 in (1 980 mm)	12 ft 3 in (3 730 mm)	12 ft 3 in (3 730 mm)
<b>Maximum Digging Depth</b>	24 ft 10 in (7 580 mm)	26 ft 8 in (8 140 mm)	21 ft 1 in (6 420 mm)	30 ft 2 in (9 200 mm)	21 ft 4 in (6 490 mm)
<b>Maximum Reach @ Ground Level</b>	36 ft 7 in (11 160 mm)	39 ft 1 in (11 900 mm)	36 ft 11 in (11 260 mm)	43 ft 6 in (13 270 mm)	35 ft 5 in (10 800 mm)
<b>Other Available Configurations</b>		Long Reach (LR)			Mass Excavation (ME)



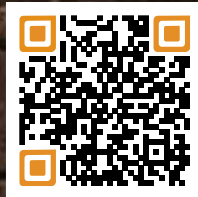
# GET TO KNOW THE ALL-NEW CASE E SERIES EXCAVATORS

Here are additional videos and resources to learn more about the exciting new lineup of hydraulic excavators from CASE.

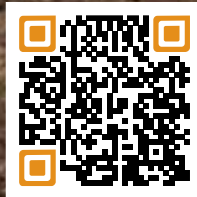


## CX750D

- Isuzu AQ-6WG1X
- 6
- 957 (15.6)
- 512 (382)
- 1,623 (2,200)
- 75,090 (334)
- 63,620 (283)
- 158,300 (71 800)
- 101,000 (449)
- 6.7
- 2.7 (4.3)
- 14 ft 2 in (4 320 mm)
- 11 ft 6 in (3 510 mm)
- 43 ft 10 in (13 370 mm)
- 22 ft 10 in (6 960 mm)
- 12 ft 2 in (3 700 mm)
- 19 ft 4 in (5 880)
- 13 ft 11 in (4 250 mm)
- 2 ft 11 in (900 mm)
- 4 ft 11 in (1 500 mm)
- 2 ft 9 in (825)
- 13 ft 3 in (4 050 mm)
- 32 ft 4 in (9 850 mm)
- 47 ft 5 in (14 450 mm)
- Mass Excavation (ME)



**CASE E SERIES  
EXCAVATORS**



**CASE E SERIES  
WALKAROUND**



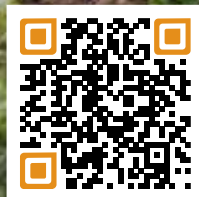
**HYDRAULIC FLOW  
CONTROL BALANCE**



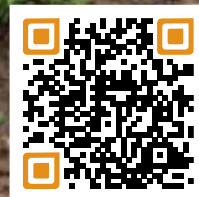
**NEW  
OPERATING  
MODES**



**NEW  
FPT ENGINES**



**CONFIGURABLE  
BUTTONS**



**PROPER AND  
PRODUCTIVE  
ATTACHMENT SETTINGS**





# BUILDING A STRONG CASE.

Since 1842, we at CASE Construction Equipment have lived by an unwavering commitment to build practical, intuitive solutions that deliver both efficiency and productivity.

We continually strive to make it easier for our customers to implement emerging technologies and new compliance mandates.

Today, our global scale combined with our local expertise enables us to keep customers' real-world challenges at the center of our product development. This focus has led to numerous innovations like Ride Control™, electro-hydraulic controls, Blade Shake, PowerLift™, over-center boom design and the peace of mind that only CASE ProCare provides.

Every CASE machine is backed by more than 300 North American dealer locations, thousands of OEM, remanufactured and all-makes parts, and flexible financing and insurance options that provide the kind of reliable, steadfast support you expect from a professional partner.

We are passionate about improving the lives of others, whether investing in our veterans or raising awareness about local infrastructure initiatives through Dire States. Our goal is to build both stronger machines — and stronger communities.

At the end of the day, we do what's right by our customers and our communities so that they can count on CASE.

[CaseCE.com/Excavators](https://www.casece.com/Excavators)

©2022 CNH Industrial America LLC. All rights reserved. CASE, CNH Industrial Capital and CNH Industrial Trademarks are registered in the United States and many other countries, owned by or licensed to CNH Industrial N.V., its subsidiaries or affiliates. Printed in U.S.A. Contains 10% post-consumer fiber.

**Form No. CCE202209EXCAVATORS**  
Replaces Form No. CCE202107EXC

IMPORTANT: CASE Construction Equipment Inc. reserves the right to change these specifications without notice and without incurring any obligation relating to such change. Availability of some models and equipment builds vary according to the country in which the equipment is used. The illustrations and text may include optional equipment and accessories and may not include all standard equipment. Your CASE dealer/distributor will be able to give you details of the products and their specifications available in your area.



CASE Construction Equipment is biodiesel-friendly.

NOTE: All engines meet current EPA emissions regulations. All specifications are stated in accordance with SAE Standards or Recommended Practices, where applicable.



Always read the Operator's Manual before operating equipment. Inspect equipment before using it, and be sure it is operating properly. Follow the product safety signs and use any safety features provided.